

*Sophisticated
Hand-tufted
Rug Collection*



Stéphanie
Bouquet

Design: Pissaro

PRODUCT

Type: Hand Tufting
Construction: Tufting Frame

COMPOSITION

Pile: 100% New Zealand Thin Wool Yarn
Origin: Italy
Primary backing: 100% Polyester Latex:
100% latex
Backing: 100% Polyester

WEIGHTS AND THICKNESS

Pile height: 18 mm
Total thickness: 20 mm
Pile weight: 4 kg/m²
Total weight: 5.5 kg/m²

SIZES

Width: 10.5m
Length: No limit

APPLICATION

Rugs with high resistance to wear, appropriate for residential market or private areas in the hotel sector.

INSTALLATION

Plain, dry and clean surface.
Overall adhesion or stretched.



OTHER CHARACTERISTICS

Capacity of resistance to light: 5 or above
Colour fastness: 4 or above
Treatment anti-moth: Incorporated under request
Resistance to traffic: High

MAINTENANCE

Vacuum regularly - blot stains immediately with absorbing white paper towel until it is dry.
Do not scrub.
We recommend the services of a professional carpet cleaner.

WASHING INSTRUCTIONS

Wash by hand until 40° C / Do not use bleach / Do not wash in the washing machine / Do not iron / Do not dry-clean / Contact specialised cleaning companies.

CERTIFICATION

Fire Classification - EN 13501-1:2010-Cfl-s1 certified by LNEC

Design: Matisse

PRODUCT

Type: Hand Tufting
Construction: Tufting Frame

COMPOSITION

Pile: 100% Viscose
Yarn Origin: Portugal
Primary backing: 100% Polyester Latex:
100% latex
Backing: 100% Polyester

WEIGHTS AND THICKNESS

Pile height: 18 mm
Total thickness: 20 mm
Pile weight: 4.5 kg/m²
Total weight: 5.5 kg/m²

SIZES

Width: 10.5m
Length: No limit

APPLICATION

Rugs with high resistance to wear, appropriate for residential market or private areas in the hotel sector.

INSTALLATION

Plain, dry and clean surface.
Overall adhesion or stretched.



OTHER CHARACTERISTICS

Capacity of resistance to light: 5 or above
Colour fastness: 4 or above
Treatment anti-moth: Incorporated under request
Resistance to traffic: High

MAINTENANCE

Vacuum regularly - blot stains immediately with absorbing white paper towel until it is dry.
Do not scrub.
We recommend the services of a professional carpet cleaner.

WASHING INSTRUCTIONS

Do not use bleach / Do not wash in the washing machine / Do not iron / Do not dry-clean / Contact specialised cleaning companies.

CERTIFICATION

Fire Classification - EN 13501-1:2010-Cfl-s1 certified by LNEC

Design: Monet

PRODUCT

Type: Hand Tufting
Construction: Tufting Frame

COMPOSITION

Pile: 70% Viscose 30% Linen
Yarn Origin: Portugal
Primary backing: 100% Polyester
Latex: 100% latex
Backing: 100% Polyester

WEIGHTS AND THICKNESS

Pile height: 18 mm
Total thickness: 20 mm
Pile weight: 3.9 kg/m²
Total weight: 5.5 kg/m²

SIZES

Width: 10.5m
Length: No limit

APPLICATION

Rugs with high resistance to wear, appropriate for residential market or private areas in the hotel sector.

INSTALLATION

Plain, dry and clean surface.
Overall adhesion or stretched.



OTHER CHARACTERISTICS

Capacity of resistance to light: 5 or above
Colour fastness: 4 or above
Treatment anti-moth: Incorporated under request
Resistance to traffic: High

MAINTENANCE

Vacuum regularly - blot stains immediately with absorbing white paper towel until it is bone dry.
Do not scrub.
We recommend the services of a professional carpet cleaner.

WASHING INSTRUCTIONS

Wash by hand until 40° C / Do not use bleach / Do not wash in the washing machine / Do not iron / Do not dry-clean / Contact specialised cleaning companies.

CERTIFICATION

Fire Classification - EN 13501-1:2010 - Dfl-s1

Design: Grimaldi

PRODUCT

Type: Hand Tufting
Construction: Tufting Frame

COMPOSITION

Pile: 100% Viscose
Yarn Origin: Portugal
Primary backing: 100% Polyester
Latex: 100% latex
Backing: 100% Polyester

WEIGHTS AND THICKNESS

Pile height: 18 mm
Total thickness: 20 mm
Pile weight: 4.5 kg/m²
Total weight: 5.5 kg/m²

SIZES

Width: 10.5m
Length: No limit

APPLICATION

Rugs with high resistance to wear, appropriate for residential market or private areas in the hotel sector.

INSTALLATION

Plain, dry and clean surface.
Overall adhesion or stretched.



OTHER CHARACTERISTICS

Capacity of resistance to light: 5 or above
Colour fastness: 4 or above
Treatment anti-moth: Incorporated under request
Resistance to traffic: High

MAINTENANCE

Vacuum regularly - blot stains immediately with absorbing white paper towel until it is dry.
Do not scrub.
We recommend the services of a professional carpet cleaner.

WASHING INSTRUCTIONS

Do not use bleach / Do not wash in the washing machine / Do not iron / Do not dry-clean / Contact specialised cleaning companies.

CERTIFICATION

Fire Classification - EN 13501-1:2010-Cfl-s1
certified by LNEC

All 4 designs are available in any size and shape from our standard stock yarns.
Bespoke Designs are available on request.

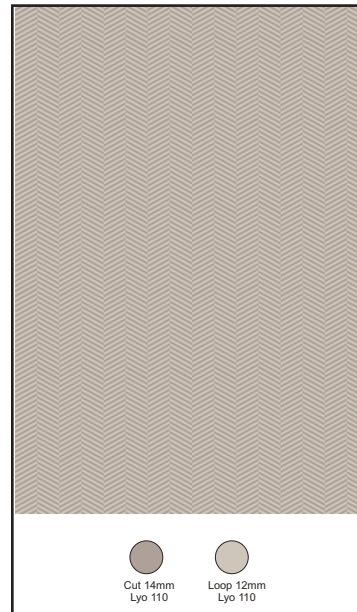
45 Wool colours
31 Viscose Linen colours
51 Lyocell colours

Our Stéphanie Bouquet Collection takes its inspiration from Archive French Roses by Delbard, which were given the names of French Painters of distinction.

These images below show the overall design and are based on a 200 x 300cm sized rug.



Grimaldi



Matisse



Monet



Pissarro



Stéphanie Bouquet Ltd.

Oak House, Journeyman's Way, Southend on Sea, Essex SS2 5TF
sales@stephaniebouquetrugs.uk

Tel: +44 (0)208 150 7186 Mob: +44 (0)7791 433405 Website: www.stephaniebouquetrugs.uk